

EasyGet WiFi MT Wireless Full Fiber Endfaces Microscope



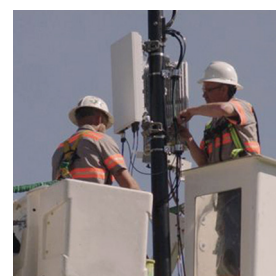
With the rapid development of MT fiber connectors, the quality requirements of their endfaces are becoming more and more stringent. Not only must the MT ferrule endfaces defects be inspected, but also the quality of PIN holes must be checked. EasyGet Wifi MT wireless full fiber endfaces microscope can quickly and easily inspect the MT all fiber endfaces in a large field of view at one time to ensure the reliability of fiber connection. It transfers real-time videos or images via Wifi to intelligent terminals, field technicians can visually check the quality of MT full fiber endfaces on their own mobile devices. Lightweight and portable, easy to use, built-in battery, and universal Type C interface and LED lighting, all these user-friendly designs, providing users unparalleled handling experience, making it the most practical MT fiber endfaces inspection tool for technicians.

Main Features

- Wide-field full endface inspection
- Smart interface replacement
- Supports Wifi and USB data transfer
- Real-time viewing and auto-save images, a design that is intuitive and intelligent
- Compatible with mainstream intelligent terminals (Wins/Android/iOS)
- Built-in battery with duration up to 5 hours
- Universal USB Type C interface, compatible with various charging devices
- Unique LED light, flexible for low-light or dark environments

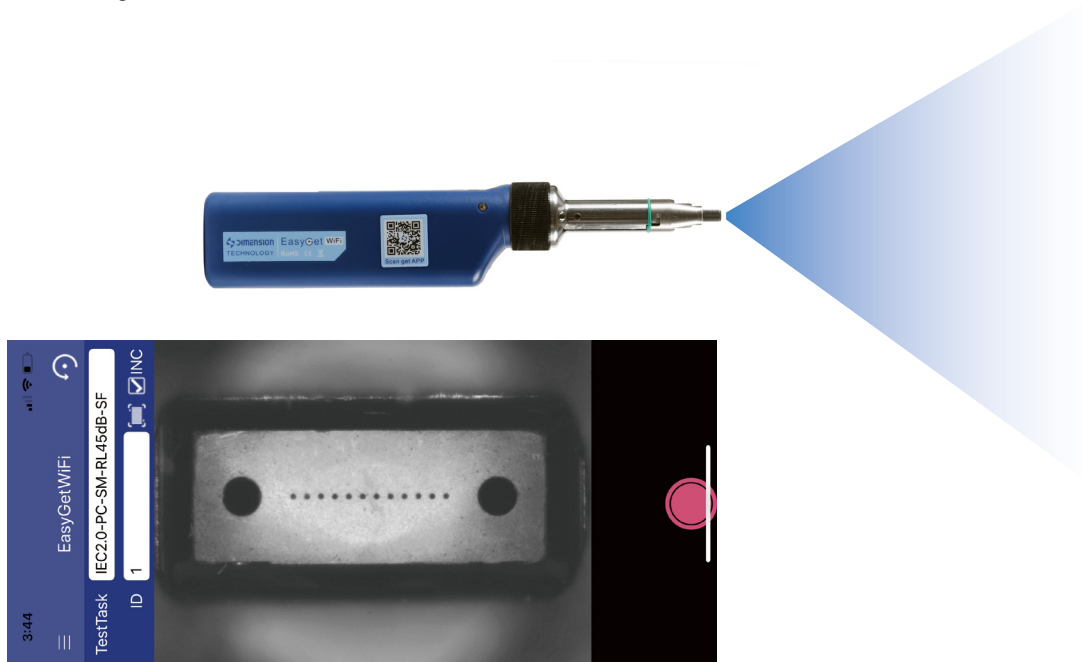
Applications

- 5G optical network construction and maintenance
- Data centers
- High reliability fiber connections
- Laboratory and manufacturing tests



◀ Full endface inspection at one time

The unique internal LED lighting method ensures the sharpness and uniformity of the image, and improves the detection area up to 7.03mm * 3.6mm. One-time inspection of the entire end surface image can clearly detect the fiber end surface and the surrounding conditions of the PIN hole.



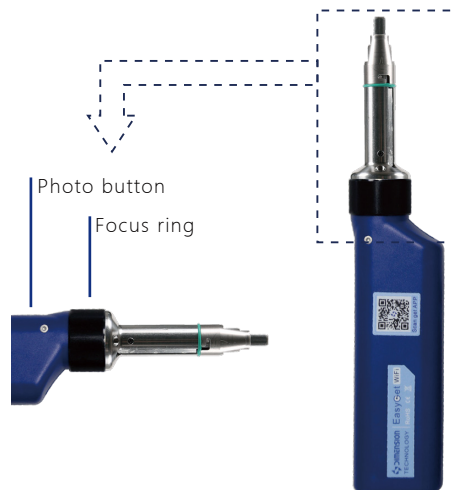
◀ Smart interface replacement

The interface is easy to install and rotate quickly. Replacement with different interfaces can support detection of MPO / PC, MPO / APC, MPO optical module, MT ferrule and other products.



◀ Lightweight and portable, easy to use

EasyGet Wifi MT is lightweight, portable, and durable. Single hand operation and slim body designs enable inspection for even the most complicated scenarios. The unique surround focus ring and image capture button, makes the fiber endface inspection easier.



211mm×44mm×33mm

◀ Wifi Data Transfer

EasyGet Wifi MT can transfer the fiber end face images to various display terminals via Wifi. By pressing the button on the body or click on smart devices, users can capture the fiber endface images or save them on display terminals, a convenient way to view and save images online.

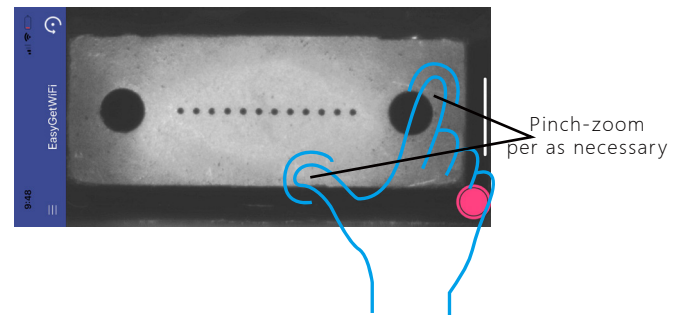
◀ Wide OS Compatibility

EasyGet Wifi MT software is widely adaptable and can be used on PCs and various mobile devices with mainstream operating systems (Wins/Android/iOS). You can use smart phones, laptops, or tablets directly for convenient operation. Scan the QR code on the body to download and install the EasyGet Wifi APP. The software is available on main online markets. No special training is required and the installation is easy and convenient.



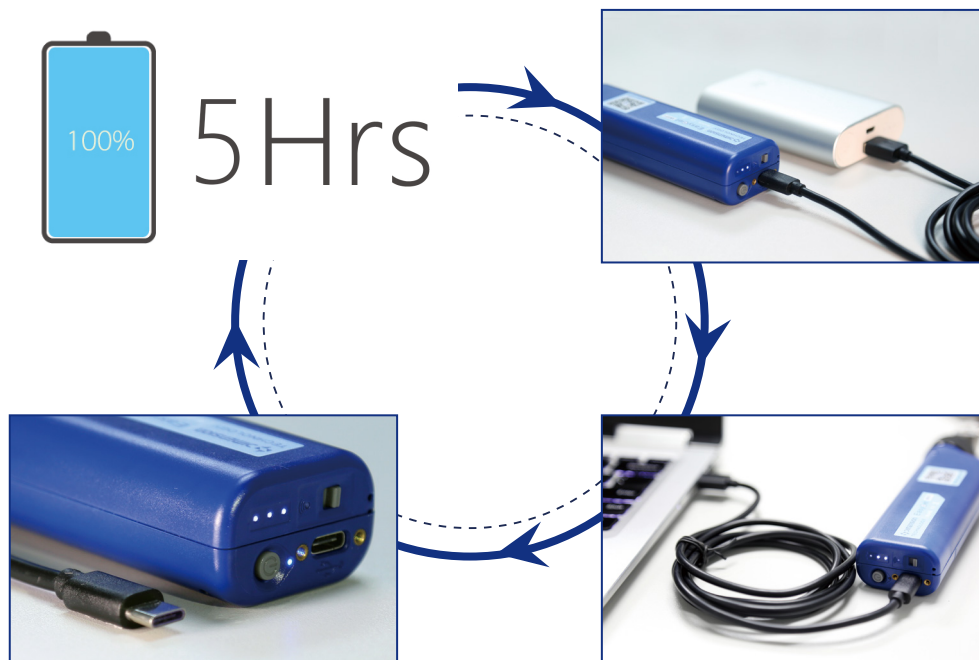
◀ Intuitive interface, intelligent displays

EasyGet Wifi MT has the most user-friendly design. The interface is simple, intuitive and intelligent. In addition to viewing and recording the fiber endface status, users can pinch-zoom images, and rotate the screen as desired.



◀ Universal USB Type C interface

EasyGet Wifi MT has a built-in rechargeable intelligent battery with duration up to 5 hours in a single operation. It also can be used while charging. EasyGet Wifi is equipped with an universal USB Type C charging interface, which is compatible with various charging devices, such as PC's USB interface, power bank, etc. Users do not need to carry a dedicated charging device.



Unique LED lighting

EasyGet Wifi MT is equipped with LED light, which can be easily used even in low-light or dark environments and provide Dimension customers with great convenience.



Specifications

Projects	Parameters
Resolution	5.5um
Image Sensor	Five million CMOS
Optical Magnification	0.81X
Video Signal Format	MJPEG
Field of View	7.03mm*3.6mm
Focusing Mode	Manual
Signal Output	WiFi 、 USB Type C
Software Compatible	Android 4.2/IOS 9.3/PC Win7 or later versions
Power Supply	Built-in Li-ion battery (chargeable & replaceable)
Life time	5 hours
Charge Time	2.5 hours
Charge Adapter	USB DC adaptor 5V/2A, including US,EU,UK,AU...adapters
Accessibility	With white LED environment lighting
Operating Temp.	-5°C ~ +40°C
Storage Temp	-20°C ~ +55°C
Relative Humidity	<90%(Working/Storage)
Weight	210 g
Size	211mm×44mm×33mm

Related Products



FPT Programmable
Fibre Polarity Tester



MT Pro Single/Multi –
Channel Integrated Interferometer



SmartCheck Intelligent
Fiber Endface Inspector



AutoGet Wifi Intelligent
Fiber Endface Microscope

Dimension Technology Co.,Ltd

Tel: +86 755-26480850

Email: sales@dimension-tech.com

Web: www.dimension-tech.com